



larson®

METAL PANELS FOR ARCHITECTURAL ENVELOPES

larcore®

ALUMINIUM HONEYCOMB PANELS FOR
ARCHITECTURAL ENVELOPES

Colour Chart

TRANSFORM YOUR IDEAS INTO REALITY



Alucoil®

Grupo Alibérico

larson® & larcove®

Aluminium Composite & Honeycomb Panels for
Architectural Wall Cladding

SOLID COLOURS



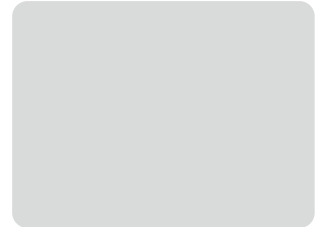
Signal White 9003 **(1)**
(ES1568)



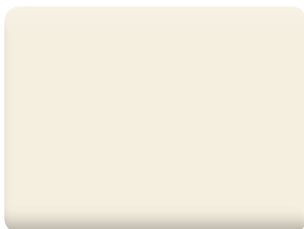
Traffic White 9016 **(1)(2)**
(ES1763)



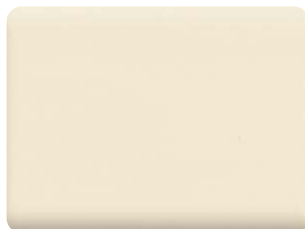
Pure White 9010 **(1)**
(ES1709)



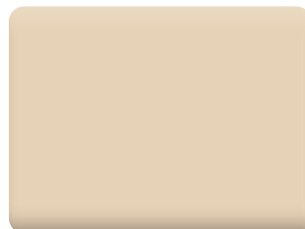
White Grey 9002
(ES1368)



Cream White 9001
(ES1339)



Cream
(ES1346)



Light Ivory 1015
(ES1454)



Silk Grey 7044
(ES1402)



Light Grey 7035 **(1)**
(ES1518)



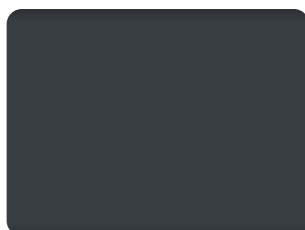
Window Grey 7040
(ES1571)



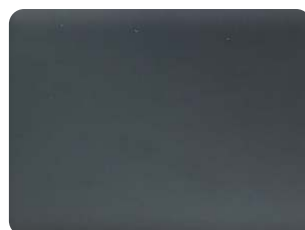
Dusty Grey 7037
(ES1565)



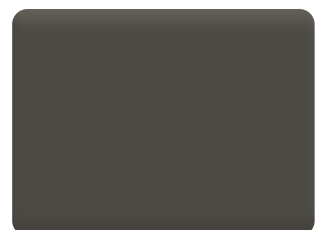
Basalt Grey 7012
(ES1343)



Anthracite Grey 7016 **(1)(2)**
(ES1563)



Graphite Grey 7024 **(1)**
(ES1369)



Umbra Grey 7022 **(1)**
(ES1551)



Mouse Grey 7005
(ES1394)



Iron Grey 7011
(ES1340)



Slate Grey 7015
(ES1453)



Grey Brown 8019 (1)
(ES1464)



Black Grey 7021 (1)
(ES1354)



Jet Black 9005 (1)(2)
(ES1536)



Copper Brown 8004
(ES1471)



Brown Chestnut 8015
(ES2045)



Sepia Brown 8014 (1)
(ES1478)



Flame Red 3000
(ES1538)



Signal Red 3001
(ES1359)



Ruby Red 3003 (1)
(ES1547)



Purple Red 3004 (1)
(ES1557)



Traffic Red 3020 (1)
(ES2100)



Yellow 1021
(ES1484)



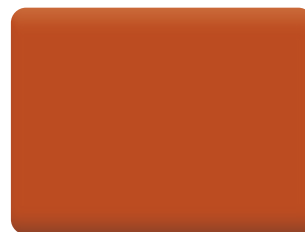
Signal Yellow 1003 (1)
(ES1513)



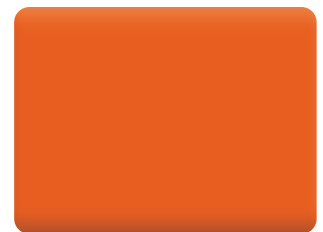
Moss Green 6005
(ES1503)



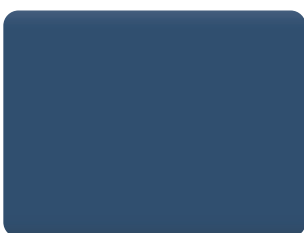
Yellow Green 6018 (1)
(ES1405)



Red Orange 2001
(ES1328)



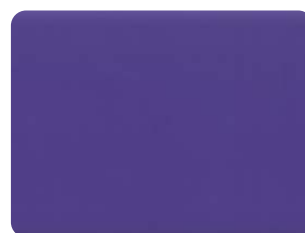
Pure Orange 2004 (1)
(ES1423)



Violet Blue 5000 (1)
(ES1545)



Ultramarine Blue 5002 (1)
(ES1512)



BC Magenta
(ES1620)



BC Green (1)
(ES1662)

METALLIC COLOURS



White Metallic (1)
(ES1520)



Sunrise Silver (1)
(ES1661)



Silver Metallic (1)(2)
(ES1990)



Smoke Metallic (1)
(ES1605)



Brilliant Metallic
(ES1537)



Champagne Metallic (1)
(ES1608)



Bronze Metallic (1)(2)
(ES1646)



Pearl Beige 1035
(ES1553)



Lead Grey (1)
(ES2132)



Graphite Grey Light
(ES1351)



Grey Metallic (1)
(ES1659)



Manganese (1)
(ES1603)



Dark Grey Metallic (1)
(ES2134)



Sunshine Grey Metallic
(ES1592)



Gold Metallic
(ES1371)



Brass Antique Metallic
(ES2230)



Copper Metallic (1)
(ES1521)



Copper 1968
(ES1403)



Patagonia Green
(ES1610)



Blue Metallic (1)
(ES1637)

MAIN POSSIBILITIES

PVDF - Polyvinylidene Fluoride

Coating based on PVDF resins (Kynar and Hylar as main brands) with extraordinary performance.

Paint thickness (nominal):

PVDF 2L Coastal: 31 μ approx.

PVDF 3L: 40 μ approx. (depending on the colour)

PVDF 3L Coastal: 45 μ approx. (depending on the colour)

- Glosses from 20 to 40 g.u.
- Excellent colour stability, almost no chalking and very good chemical resistance.
- Excellent protection against weathering, UV radiation and atmospheric contaminants.
- Excellent flexibility for profiling, bending and roll forming.
- Recommended for demanding environments like industrial and coastal areas, airports, etc.

HDP - High Durable Polyester

Coating based on HDP resins.

Standard paint thickness:

HDP 5 2L: from 35 to 40 μ approx. (depending on the colour)

HDP 5 3L: from 50 to 55 μ approx. (depending on the colour)

- Gloss from 10 to 90 g.u.
- Good protection against weathering, UV radiation and atmospheric contaminants.
- Good hardness and flexibility for profiling, bending and roll forming.

HQP - High Quality Polyester

Coating based on polyester resins.

Standard paint thickness (nominal): 25 μ approx.

- Glosses from 10 to 90 g.u.
- Good protection against weathering, UV radiation and atmospheric contaminants.
- Good hardness and flexibility for profiling, bending and roll forming.

FIND MORE REGARDING COLOURS AND PROJECTS AT:

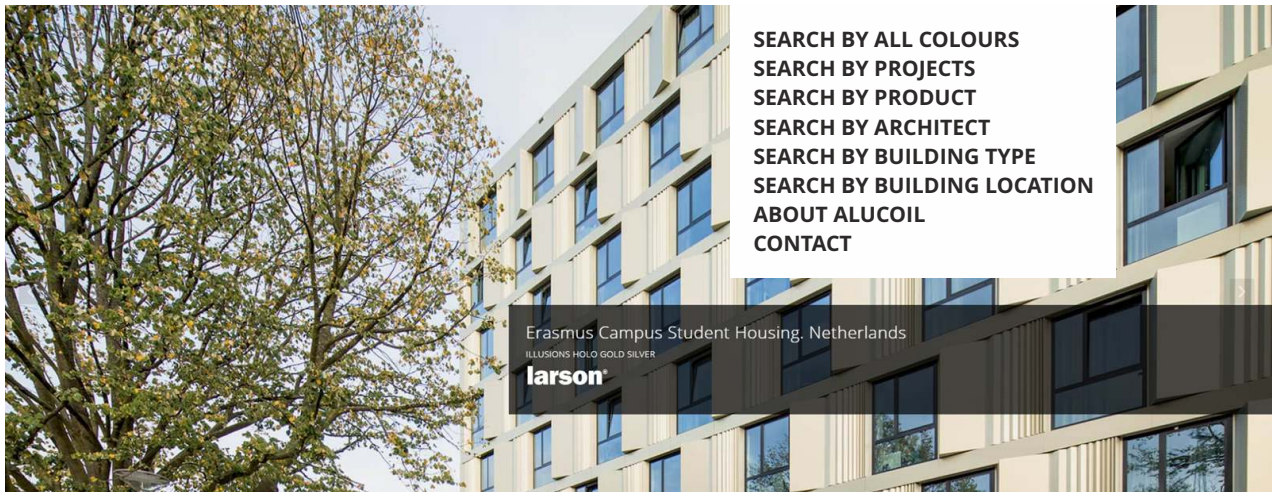


Alucoil® Design

Grupo Alibérico

Endless Architectural Design Possibilities

NEW WEB



SEARCH BY ALL COLOURS
SEARCH BY PROJECTS
SEARCH BY PRODUCT
SEARCH BY ARCHITECT
SEARCH BY BUILDING TYPE
SEARCH BY BUILDING LOCATION
ABOUT ALUCOIL
CONTACT

Erasmus Campus Student Housing, Netherlands

ILLUSIONS HOLO GOLD SILVER

larson

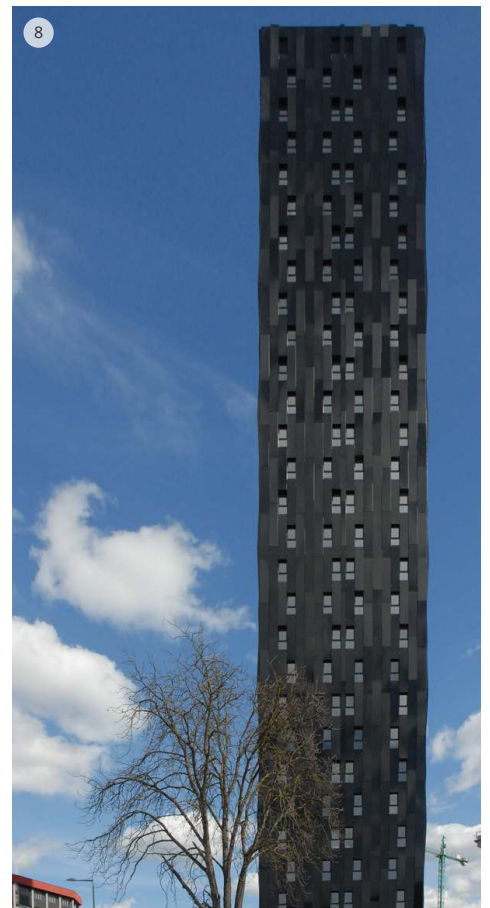
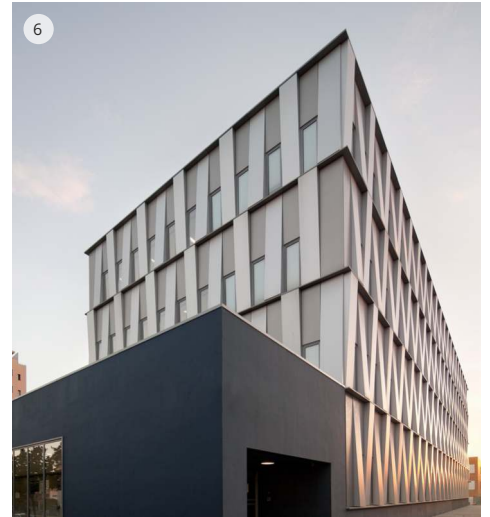
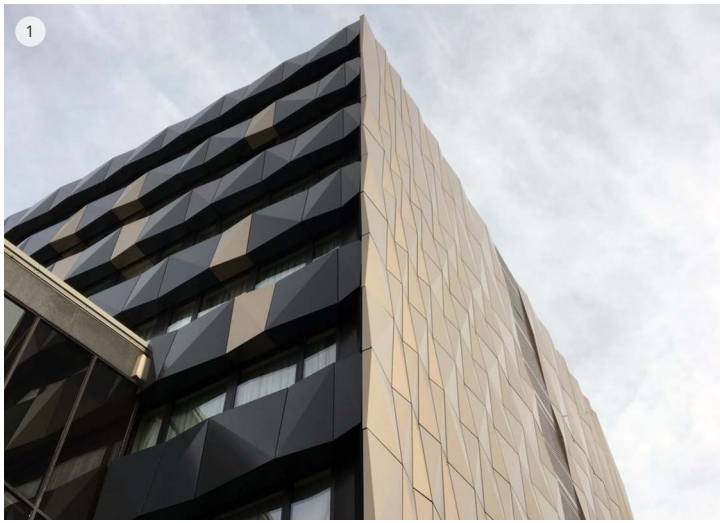
(1) **larson®** stock 1500 mm wide

(2) **larcore®** stock 1250 mm and 1575 mm wide (0,7 mm aluminium thickness)

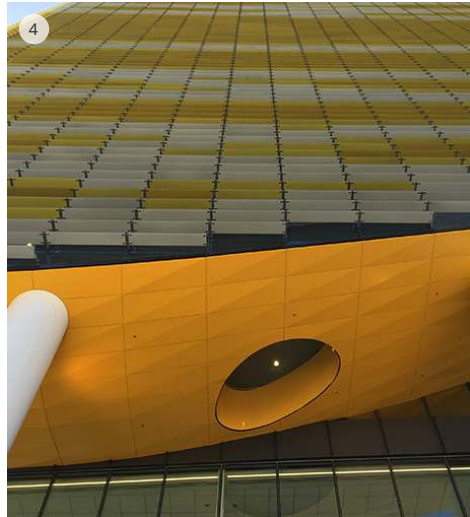
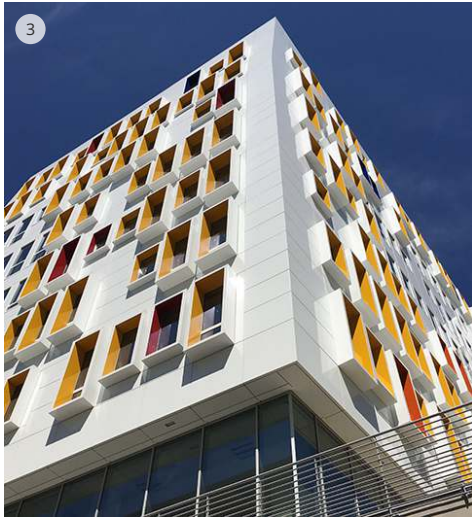
Other request availability - Widths not in stock request minimum order

The colours in this colour chart are very close to reality. We advise to select the final colour over physical samples.

NOTE: The colours shown in this document are matt finishes with a level of gloss lower than 40.



1. Marriot Hotel (Portsmouth, UK) Pearl Beige, RAL 1035 and Anthracite Grey RAL 7016. Satellite Architects / 2. Maison de l'entreprise (France) Grey Metallic and White 16. BELLECOUR Architectes / 3. EX-CASA 400 (Amsterdam, Holland) Signal White 9003. VMX Architects / 4-5. Kindergarten (Spain) 6005. 9010. 3004. 1003. 5002 / 6. Centre MCIA (Tarrasa Barcelona) Champagne Metallic and Silver Metallic. Mestura Arquitects / 7. Ukrainian Catholic University (Lviv, Ukraine) Sunrise Silver. Behnisch Architekten / 8. Torre Bolueta (Bilbao, Spain) Jet Black. VARquitectos / 9. 2NK (Tirana, Albania) Copper Brown 8004. X-Plan Studio Tirana / 10. Park Gate Tirana -Martini company- (Tirana, Albania). RAL 3011-3007-3001-7021. X-Plan Studio Tirana



1. Sector Sur health center (Cordoba, Spain) Traffic Red, Yellow 1021, Jet Black, Pure White & Ultramarine Blue. JOAQUIN SERRANO DÍAZ Arquitectos / 2. IDOM Headquarter (Bilbao, Spain) Anthracite Grey / 3. Housing building (Marsella, France) White / 4. Adelaide University Nursery School (Australia) Holo White Silver, Signal yellow, Sky blue. Lyons Architects / 5. Muziekacademie (Dilbeek, Belgium) Sunrise Silver, Smoke Metallic. Carlos Arroyo Arquitectos / 6. Bordeaux football stadium (Bordeaux, France) White. Herzog & de Meuron / 7. SPM Shoes & Boots (Nieuwkuijk, Holland) Grey Metallic Perforated / 8. Park 2020 building (Stavanger, Norway) Silver Metallic. Alliance architecture studio / 9. Cereal Docks (Camisano Vicentino, Italy) BC Green & Green Patina / 10. Hotel Orange (Poland) Orange / 11. Sport Center (Alicante, Spain) BC Green, Traffic Red, BC Magenta, Orange



Alucoil®

Grupo Alibérico

Specialists in the **Manufacture of Metal and Honeycomb Panels for Architectural Envelopes**

Advanced Materials - 40 years' Experience - In house-Technology

Wide Product Range - Top Quality Products - Premium Brands

Innovative Solutions - Local Service - Fast & Flexible

The Easiest Company to do Business with!



Polígono Industrial de Bayas C/ Ircio. Parcelas R72-77

09200 Miranda de Ebro, Burgos - SPAIN

Tel.: +34 947 333 320 Fax: +34 947 324 913

info@alucoil.com

www.alucoil.com

The colours in this colour chart are very close to reality. We advise to select the final colour over physical samples.

Alucoil® S.A.U. reserves the right to change or remove information contained in this brochure without prior notice.

Please visit us at **www.alucoil.com** to check the latest version.